



I-84 Danbury

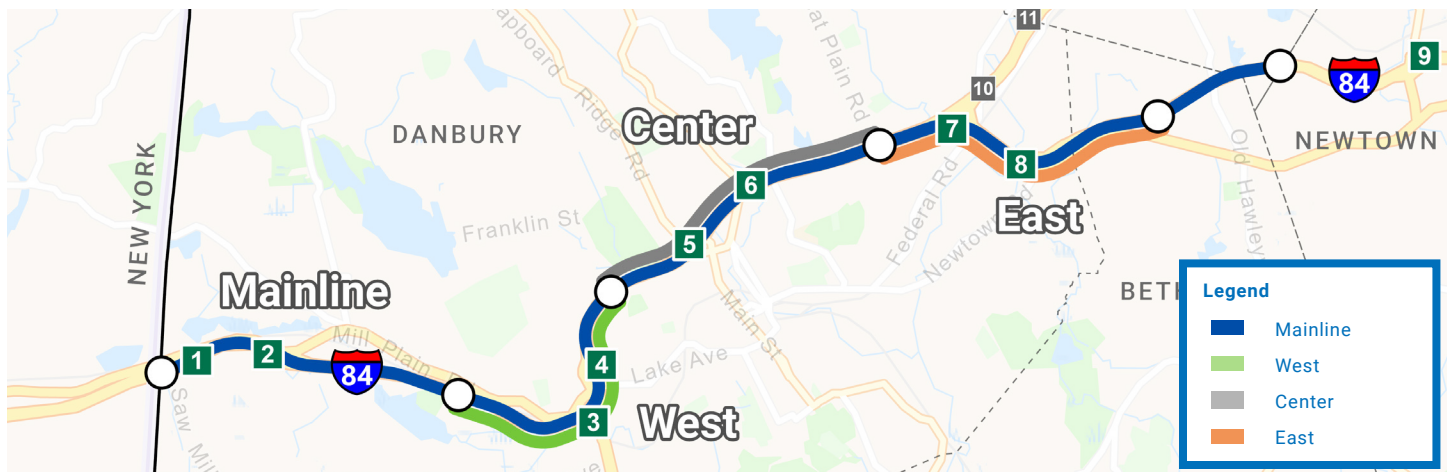


Winter 2025 Newsletter

I84Danbury.com

[f](#) I-84 Danbury Project [t](#) @I84Danbury [i](#) @I84Danbury

WINTER 2025



From Many to Few Presenting the Reasonable Range of Alternatives

Working closely with stakeholders and guided by the study’s purpose and needs assessment, the I-84 Danbury study aims to enhance the commuter and freight transportation experience in one of Connecticut’s fastest-growing regions. The study seeks to address the pressing need for improved transportation infrastructure by undertaking a transformative highway redesign to reduce congestion and enhance the flow of people and goods, as well as by improving access to commuter rail, bus transit, and Park & Ride areas.

The study, spanning nine miles with eight interchanges, has the potential to significantly improve travel for commuters and long-haul drivers alike. By reducing congestion, speeding up the movement of goods, enhancing network connectivity, and improving access to downtown and key institutions, these potential solutions will have far-reaching impacts on the daily lives of Danburians for generations to come.

The I-84 Danbury study assessed 26 concepts into four geographic segments and resulted to the advancement of the following concepts as reasonable range of alternatives:

The **mainline** (blue) segment looks at the I-84 mainline between NY State line and east of Exit 8. The concept advancing on this segment, Concept 1, will address lane continuity, eliminate left-hand exits, and, where possible, improve highway curvatures.

The **west** (green) segment seeks to improve travel conditions in the vicinity of Interchanges 3 and 4. Concept 5 will reduce the congestion and address weaving between I-84 and Route 7 traffic with a new off-ramp to Segar Street in the eastbound direction. A median barrier will be installed to prohibit I-84 eastbound traffic to use the Lake Avenue exit (Interchange 4).

What’s Inside

1 From Many to Few

2 From Many to Few

3 Local Spotlight: Waleed Albakry

4 Keeping Tabs on Improvements

4 Get Involved!



From Many to Few

The **east** (orange) segment explored improvements between Interchanges 7 and 8. Concept 15 will provide collector-distributor roads between Interchanges 7 and 8 to eliminate weaving condition. Local improvements are proposed on Newtown Road (SR 806) and U.S. Route 6.

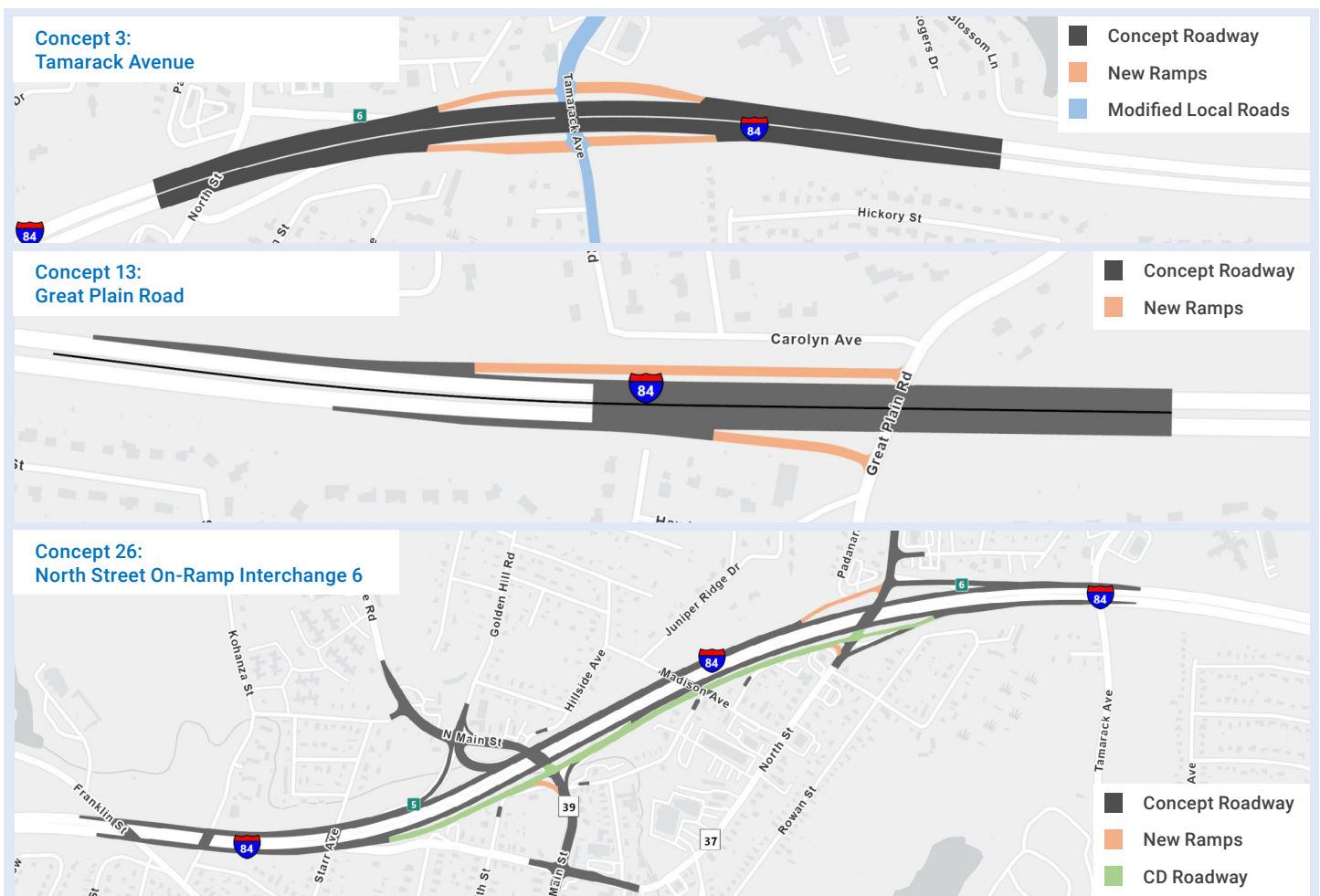
The **center** (gray) segment looks between Interchanges 5 and 6, which provides access to Downtown and Danbury Hospital. Three concepts are advancing to Reasonable Range of Alternatives as shown in the figures below.

Managed by the Connecticut Department of Transportation (CTDOT), the study has undergone a rigorous screening process for all concepts, ensuring alignment with study goals and minimal environmental impact within the existing right of way.

Three Center Concepts will advance for further study in the Reasonable Range of Alternatives in the future environmental review:

- **Concept 3** – this concept will provide full access at Tamarack Avenue and eliminates access to North St.
- **Concept 13** – this will create a new partial interchange at Great Plain Road onto I-84 to improve access to Danbury Hospital and points west. This concept keeps the existing access to North St.
- **Concept 26** – this concept will add a Collector-Distributor road between Main Street and North Street in the eastbound direction. This concept provides a new westbound on-ramp from North St. to I-84.

For more information on each of the advancing concepts, visit i84danbury.com/concepts.





Local Spotlight: Waleed Albakry

Danbury's Planning Director

As Danbury's new Planning Director, Waleed Albakry draws on a global perspective and decades of experience. His approach blends community focus with innovative problem-solving to make Danbury more accessible, vibrant, and connected.

Waleed's passion for exploration extends beyond urban planning. In his spare time, Waleed enjoys hiking and immersing himself in nature, relishing the tranquility it offers. As an avid traveler, he eagerly discovers new cultures and landscapes. When he's not outdoors, Waleed can often be found lost in a gripping Scandinavian crime fiction novel or watching classic movies, which provide both entertainment and a window into different eras of storytelling. This diverse range of interests enriches his perspective and influences his approach to urban planning.

Born and raised in the Mediterranean city of Alexandria, Waleed immigrated to North America over 20 years ago. His journey took him from Canada to the United States, eventually settling in Tennessee before making his way to Danbury last summer. Moving from the Southern to Northern U.S. highlighted stark contrasts in road design and urban planning, an experience that now shapes his vision for Danbury—a city he proudly calls home.

As the Planning Director for Danbury, Waleed is focused on accessible housing, creating a vibrant Downtown, and running an efficient planning department. Recently, the City completed its 2023 Plan of Conservation and Development and initiated Downtown Streetscape projects that align with these goals. He also collaborates closely with City Engineers and I-84 Danbury study team to identify assess existing infrastructure needs.



Waleed Albakry, Planning Director

Given that Danbury is a commercial hub with one of Connecticut's largest malls, the Danbury Fair, he believes there's tremendous potential to leverage its proximity to New York State and New York City for economic growth and community development. A key focus of Waleed's planning strategy is improving traffic flow and accessibility along I-84 by addressing sharp curves and creating stronger connections within the city.

Waleed is thrilled to be working with the I-84 Danbury team, who shared the same vision and dedication of building a brighter future for Danbury.

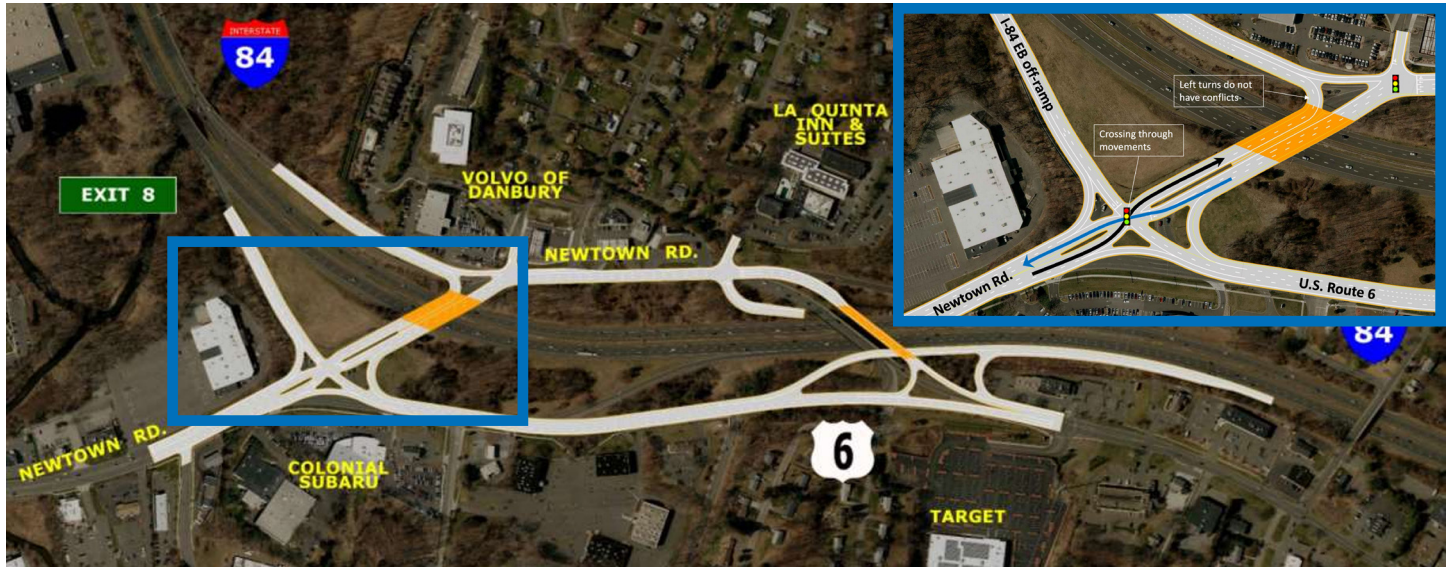
Through a mix of global perspective and local dedication, Waleed Albakry is reshaping Danbury into a city that prioritizes quality of life, economic opportunity, and seamless connections. His vision extends beyond infrastructure—he is working to foster a sense of place where residents and visitors alike can thrive. From improving I-84 to revitalizing Downtown, Waleed's efforts are creating a more inclusive and dynamic Danbury. His work is a testament to the transformative power of thoughtful planning and a reminder that cities are strongest when they reflect the aspirations of their communities.

A key focus of Waleed's planning strategy is improving traffic flow and accessibility along I-84 by addressing sharp curves and creating stronger connections within the city.



Other Improvements

Potential Breakout Projects



Aerial view of the potential "Diverging Diamond" interchange at exit 8.

The larger project to address the needs of the 9-mile stretch of the I-84 corridor in Danbury will take decades to design and construct and the city needs an immediate fix to the current congestion problem and lack of mobility. I-84 Danbury Study Team explored other concepts that can be built independently and be implemented before the larger project. These improvements are among the potential breakout projects moving forward:

Flex Lane (previously Dynamic Lane Use)

Used in other states and new to Connecticut, this would open the left shoulder to be used for additional capacity as needed, typically during peak commuting hours between Route 7 interchanges. The construction of this project will be limited to its existing footprint and can be completed faster.

Interchange 8 Improvements

This potential project will introduce "Diverging Diamond Interchange" that allows two directions of traffic to cross to the opposite side of the road. This initiative is new to the State and will improve the circulation on Newtown Road and access to I-84 ramps. The figure shows traffic configuration of Diverging Diamond Interchange at Interchange 8.

Local Roads

Just north of downtown, a potential project will improve the driver's line of sight on Main St., congestion and overall traffic operations at Main St., Downs St., and North St. intersection. This intersection is vital as this serves the exit 5 traffic from east bound direction of I-84 and provides access to downtown Danbury.

Transit

Potential regional transit service with possible express bus routes connecting downtown Danbury with Brewster, Norwalk train station and other town centers. A local circulator shuttle is also being evaluated to link the express service with existing HART stops.

Bike Plan and Pedestrian Improvements

Bicycle improvements on Mill Plain Road and other streets will repurpose the existing roadway to enhance bicycle travel by looking at shared used paths and separated bike lanes where possible.

These breakout projects are currently being evaluated and/or in design to help implement mobility in Danbury region in the near term.

Get Involved!

- Attend a meeting
- Visit I84Danbury.com and sign up for project updates

- Like us on Facebook: [I-84 Danbury Project](https://www.facebook.com/I84DanburyProject)
- Follow us on Twitter: [@I84Danbury](https://twitter.com/I84Danbury)
- Follow us on Instagram: [@I84Danbury](https://www.instagram.com/I84Danbury)